



ESTATE

BY PIONEER

Distinctive Living Redefined

Installation Guide

Two Handle Pot Filler Faucet:


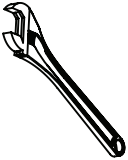



- 124610-H58
- 125610-H65

This product meets the following standards:

- ASME A112.18.1
- ANSI A117.1
- ANSI / NSF 61, SECTION 9
- CUPC / IAPMO LISTED / ADA COMPLIANT
- CONTAINS NO MORE THAN 0.25% WEIGHTED AVERAGE LEAD CONTENT

Thank you for purchasing this pioneer quality product.

Tools Required

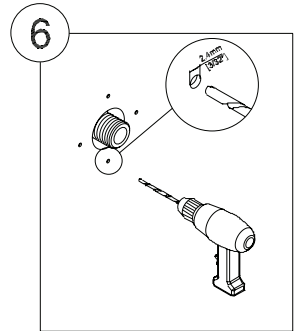
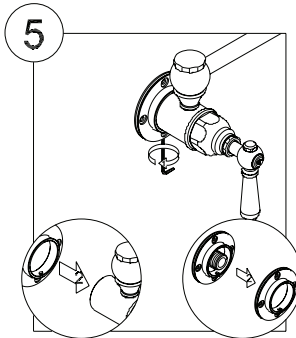
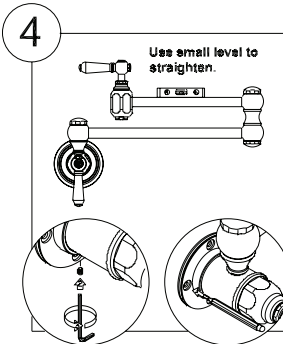
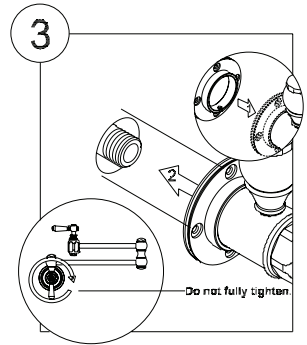
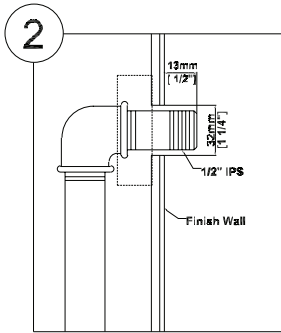
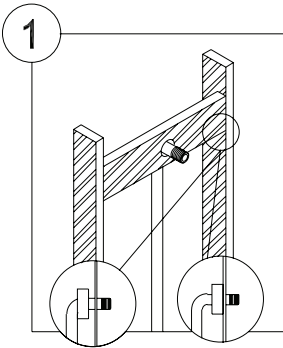
				
Phillips Head Screw- driver	Adjustable Wrench	Teflon Tape	Plumbers Putty	Rags

Prior to Installation

- Observe all local plumbing and building codes before you begin installation.
- Carefully shut off both hot and cold water supplies from under the sink.
- Plug the sink drain with a soft cloth to prevent intrusion of debris or the loss of any faucet parts.
- For replacement installations, carefully remove the existing faucet and clean the entire surface of the sink mounting holes.
- Pioneer reserves the right to make changes in the design of faucets without notice

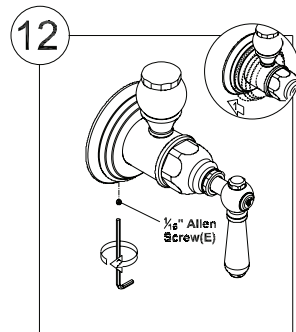
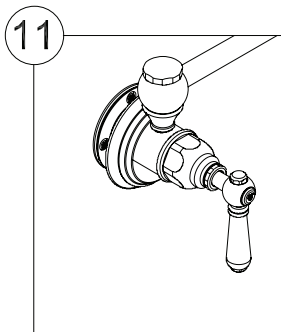
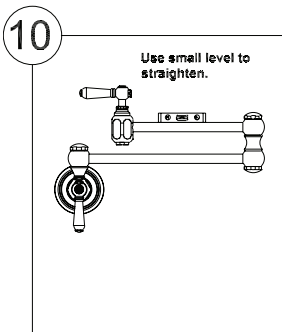
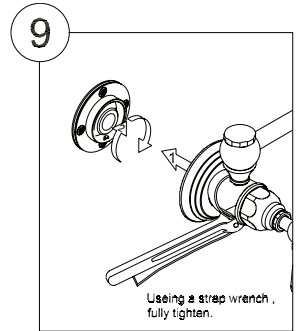
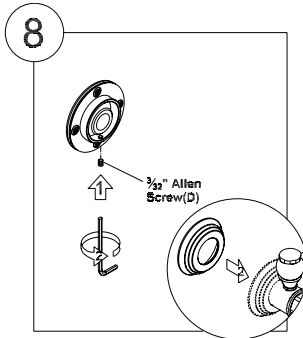
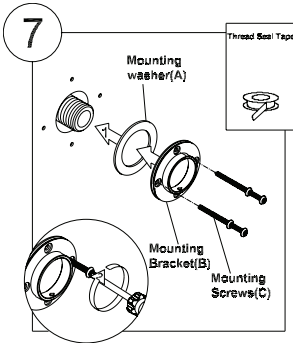
Faucet Installation

1. Ensure the 1/2" IPS/NPT threaded inlet is installed properly.
2. Confirm the 1/2" IPS/NPT threaded inlet pipe length is 1/2" extend beyond the finished wall.
3. After wall is finished install the pot filler to the 1/2" IPS/NPT threaded inlet pipe. Do not fully tighten.
4. Level the pot filler. Mark the hole location on the finished wall.
5. Remove the pot filler.
6. Drill the four 3/32" holes on the premarked location.



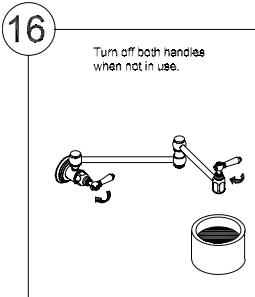
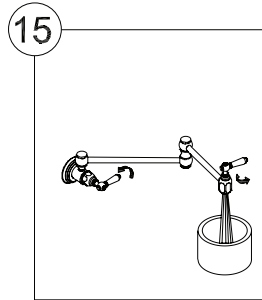
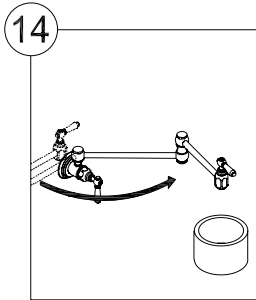
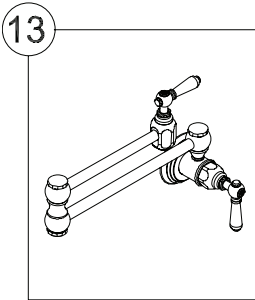
Faucet Installation

7. Apply thread seal tape before installing the mounting bracket(B). Install the mounting bracket(B) with the mounting screws (C) supplied with faucet. Ensure the mounting washer(A) is behind the mounting bracket(B) to form the watertight seal. Put the mounting washer on the wall and drill the 3/32" hole on the same location as wall. Tighten the mounting screws(C).
8. Remove the 3/32" allen screw(D).
9. Tighten the pot filler with strap wrench. fully tighten the pot filler. Ensure the notches on the faucet align with the 3/32" allen screw(D).
10. Level the pot filler.
11. Tighten the 3/32" allen screw(D).
12. Place the escutcheon in correct position. Tighten the 1/16" allen screw(E).



Faucet Installation

13. Make sure the pot filler spout swivels smoothly.
14. Place a bucket underneath of the pot-filler. Remove the aerator.
15. Turn on inlet water supply. Make sure all the connections are secure. Open both handles. Flush and allow water to run at full flow for at least one minute.
16. Turn off water.



For more care information or trouble shooting inquiries about your Pioneer Product, please see the contact information on the back page.

ESTATE
BY PIONEER
Distinctive Living Redefined

3325 S. Garfield Ave | City of Commerce, CA 90040
Telephone: (800) 338-9468 | (323) 888-8873 | Fax: (323) 888-9515
Hours: M - F, 7:30am to 5:00pm PST