



# ESTATE

BY PIONEER

Distinctive Living Redefined

## Installation Guide

### **Two Handle Lavatory Widespread Faucet:**

- 125400-H60

### **This product meets the following standards:**

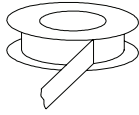
- ASME A112.18.1
- ANSI A117.1
- ANSI / NSF 61, SECTION 9
- CUPC / IAPMO LISTED / ADA COMPLIANT
- CONTAINS NO MORE THAN 0.25% WEIGHTED AVERAGE LEAD CONTENT

Thank you for purchasing this pioneer quality product.

## Tools Required



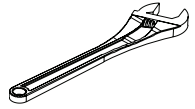
Plumbers Putty



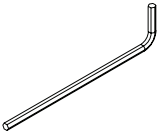
Teflon Tape



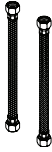
Rags



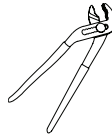
Adjustable-Wrench



3/32" Allen Wrench



Flex Hose



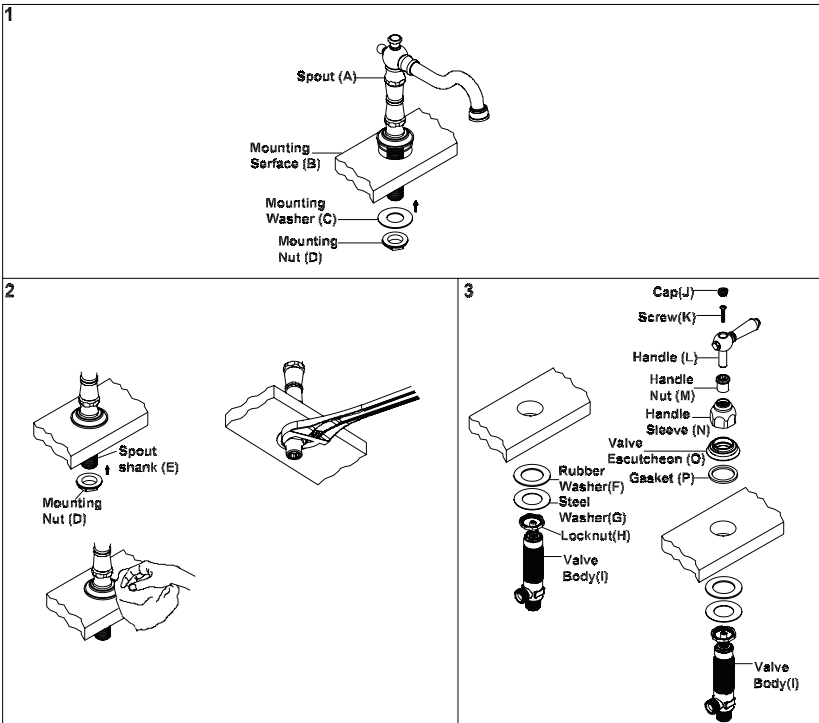
Wrench

## Prior to Installation

- Observe all local plumbing and building codes before you begin installation.
- Carefully shut off both hot and cold water supplies from under the sink.
- Plug the sink drain with a soft cloth to prevent intrusion of debris or the loss of any faucet parts.
- For replacement installations, carefully remove the existing faucet and clean the entire surface of the sink mounting holes.
- Pioneer reserves the right to make changes in the design of faucets without notice as specified in the Price Book.

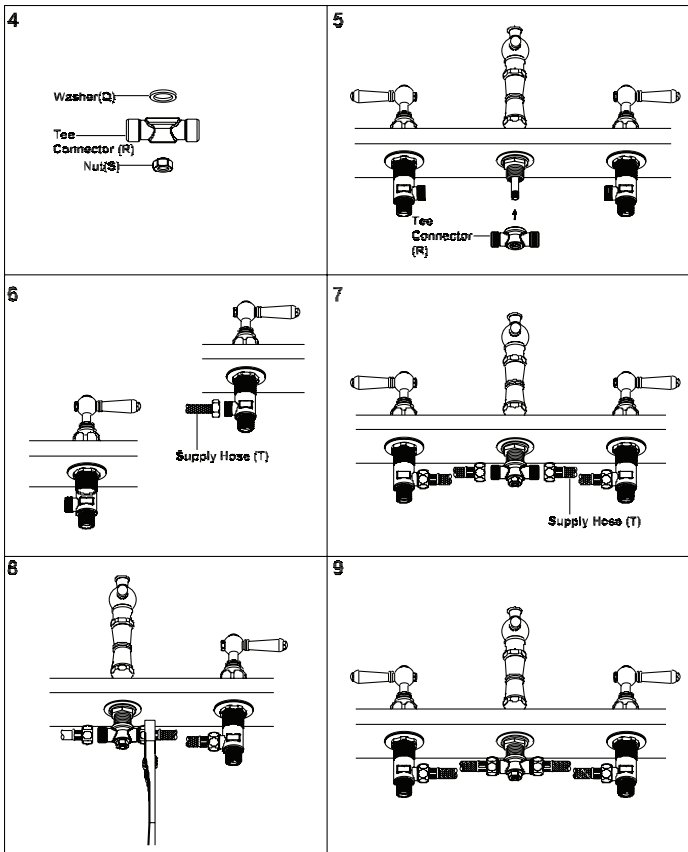
# Faucet Installation

- **Note:-** The spout & valve escutcheon is supplied with rubber gasket to form watertight seal. Do not use rubber washer and plumbers putty both to form watertight seal.
1. Insert spout shank (E) and spout escutcheon into the mounting hole. Slide mounting washer (C) from underneath of the surface.
  2. Thread mounting nut (D) from underneath of the surface. Tighten the mounting nut(D) with the help of adjustable wrench. Do not overtighten. Clean the faucet surface with rags if necessary.
  3. Place the valve escutcheon (O) from the top. Ensure the gasket(P) is beneath the valve escutcheon(O). The hot side valve (I) is mark with 'Hot Valve' label and the cold side valve (I) is mark with 'Cold Valve' label. Place the cold side valve (I) with washers (F,G) and locknut(H) through mounting hole from underneath sink. Thread the valve escutcheon(O) from top of the valve. Adjust the valve to proper height. Hand tighten the handle sleeve (N) to valve escutcheon (O). Thread the handle nut (N) to the valve (I). Install the handle (L) with the help of screw (K). Ensure the handle (L) is secure on the valve cover with cap (J). Make sure the valve outlet faces toward the spout. Install the hot side valve, handle and escutcheon in the same manner. Ensure the handles turn in correct direction. Tighten the locknut to secure the valve to the mounting surface (B).



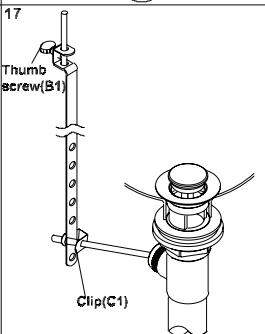
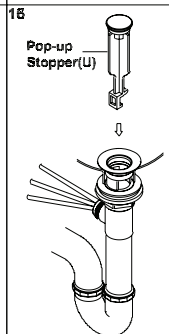
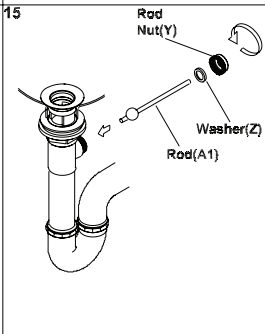
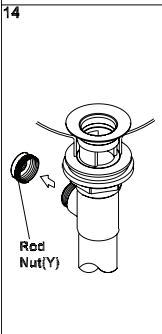
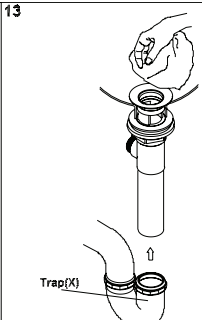
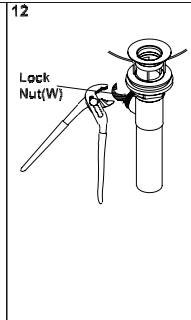
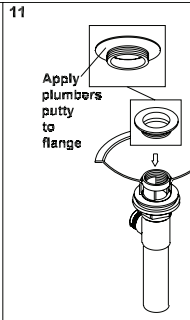
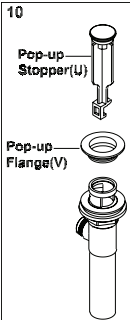
# Faucet Installation

- Put the washer (Q) in the tee connector (R).
- Thread the tee connector (R) to the spout shank. Do not overtighten. Then thread the nut(S) to the spout shank.
- Connect the supply hose (T) to the cold side outlet of the valve body . Tighten with adjustable wrench. Do not overtighten.
- Connect the supply hose (T) to hot side outlet of the valve body.
- Connect the other end of the supply hose to the tee connector (R). Tighten with adjustable wrench. Do not overtighten.
- Ensure the both side of the supply hoses are securely connected.



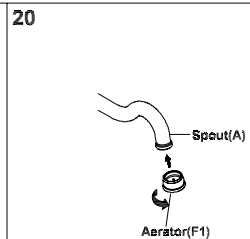
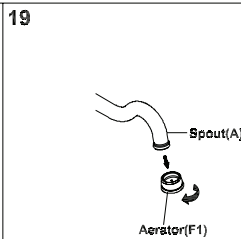
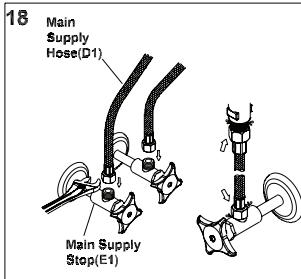
# Pop-Up Drain Installation

10. Remove the pop-up stopper (U) and pop-up flange (V) from the pop-up assembly.
11. Apply adequate amount of plumbers putty underside of pop-up flange (V). Then insert pop-up drain assembly from underside of the sink and secure the pop-up flange (V) from the top.
12. Rotate the drain body so that horizontal rod hole faces back of the faucet. Hold the pop-up assembly in place and tighten the locknut (W).
13. Remove the excess putty. Connect the trap (X). ( check manufacturer's instructions for installation)
14. Remove rod nut (Y).
15. Ensure the washers (Z) is in place (for Brass Pop-Up Only). Insert rod (A1). Tighten the Rod Nut (Y).
16. Push rod down to open drain. Insert the pop-up stopper (U) carefully. Test if the pop-up stopper (U) is working properly.
17. Connect pop-up bracket to the rod using clip (C1). Tighten the thumbscrew (B1) to connect pop-up bracket to pop-up lift rod.



## MAIN SUPPLY CONNECTION

18. Connect main supply Hose (D1) to the main supply stop (E1). Tighten with adjustable wrench. Do not over-tighten. Connect the other side of the main supply Hose (D1) to the valve body inlet.
19. Remove the aerator (F1) from the spout (A). Turn on water. Check of any leaks. Make sure all the connection are secure. Make sure the pop-up drain is open. Open both hot and cold handles.
20. Flush and allow water to run at full flow for at least one minute. Turn off water. Replace aerator(F1).



For more care information or trouble shooting inquiries about your Pioneer Product, please see the contact information on the back page.



ESTATE  
BY PIONEER  
Distinctive Living Redefined

3325 S. Garfield Ave | City of Commerce, CA 90040  
Telephone: (800) 338-9468 | (323) 888-8873 | Fax: (323) 888-9515  
Hours: M - F, 7:30am to 5:00pm PST