

# ESTATE

BY PIONEER

Distinctive Living Redefined

## Installation Guide

### **Two Handle Kitchen Bridge Faucet :**


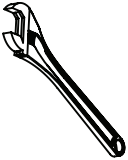



- 125240-H66
- 125241-H66

### **This product meets the following standards:**

- ASME A112.18.1
- ANSI A117.1
- ANSI / NSF 61, SECTION 9
- CUPC / IAPMO LISTED / ADA COMPLIANT
- CONTAINS NO MORE THAN 0.25% WEIGHTED AVERAGE LEAD CONTENT

*Thank you for purchasing this pioneer quality product.*

## Tools Required

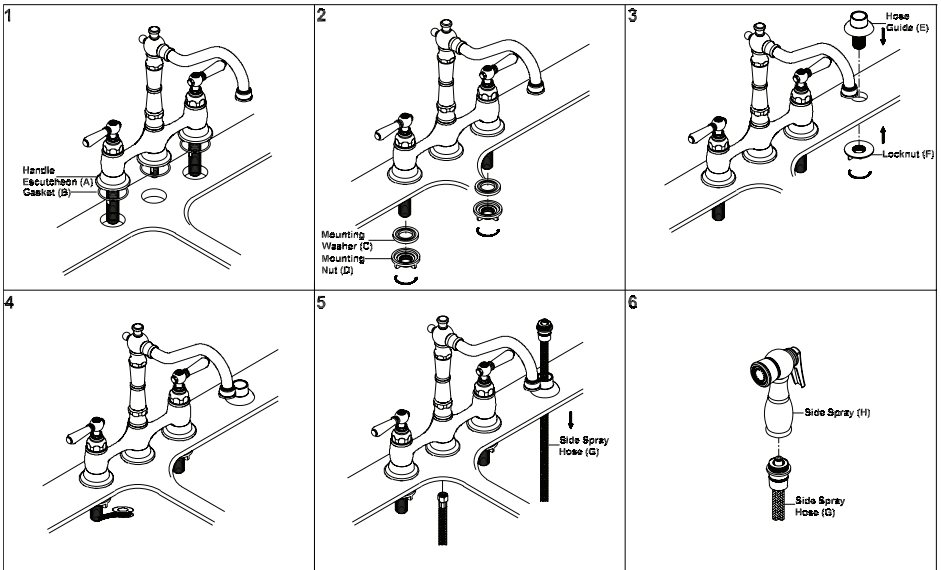
				
Phillips Head Screw- driver	Adjustable Wrench	Teflon Tape	Plumbers Putty	Rags

## Prior to Installation

- Observe all local plumbing and building codes before you begin installation.
- Carefully shut off both hot and cold water supplies from under the sink.
- Plug the sink drain with a soft cloth to prevent intrusion of debris or the loss of any faucet parts.
- For replacement installations, carefully remove the existing faucet and clean the entire surface of the sink mounting holes.
- Pioneer reserves the right to make changes in the design of faucets without notice

# Faucet Installation

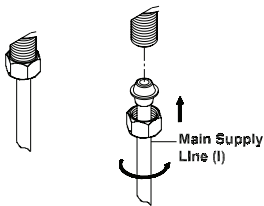
- Note:- The faucet escutcheon(A) is supplied with gasket(B) to form watertight seal. Do not use gasket(B) and plumbers putty both to form watertight seal. Do not use plumbers putty on marble countertop As it may leave stain on the surface.
- Place escutcheons(A) under neath of faucet. Ensure the gasket(B) is underneath of the escutcheons(A).
  - Lead the faucet shank through the mounint holes. Make sure 'Estate' logo face toward the front. Slide the mounting washer(C) through the faucet shank from underneath of the sink. Thread the locknut (D) from underneath of the sink.
  - Install the hose guide (E) through hole. Put adequate amount of plumbers putty underneath of hose guide (E). Thread mounting nut (F) through Hose guide. Do not overtighten.
  - Apply teflon tape to all the connections.
  - Slide the side spray hose(G) through hose guide(E). Connect to the side spray hose(G) to the side spray port from underneath of the sink.
  - Connect side spray(H) to the side spray hose(G).



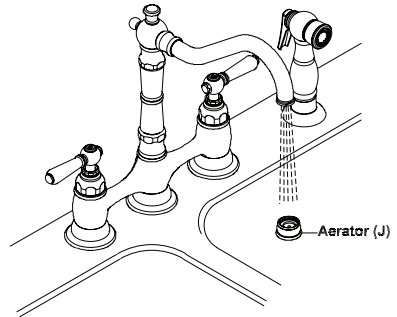
## MAIN SUPPLY CONNECTION

7. Connect the main supply line(I) to the faucet shank(left is hot water supplies and right is cold water supplies). Make sure supply nuts are securely tighten. Do not over tighten.
8. Remove the aerator (J) from the Spout by turning counter clockwise. Turn on water. Check of any leaks. Make sure all the connection are secure. Open both hot and cold Handles. Flush and allow water to run at full flow for at least one minute. Turn off water. Replace aerator. Turn on water. Test side spray. check if water diverts fully from spout to side spray and from side spray to spout. Turn off water.

7



8



For more care information or trouble shooting inquiries about your Pioneer Product, please see the contact information on the back page.



ESTATE  
BY PIONEER  
Distinctive Living Redefined

3325 S. Garfield Ave | City of Commerce, CA 90040  
Telephone: (800) 338-9468 | (323) 888-8873 | Fax: (323) 888-9515  
Hours: M - F, 7:30am to 5:00pm PST